

BLDG 3000 PATH OF TRAVEL - LEVEL 05

BLDG 3000 LEVEL 05- PATH A	89' - 2"
BLDG 3000 LEVEL 05- PATH B	94' - 1"

DRC

PZ24-12000011

07/17/2024

DYNAMIK

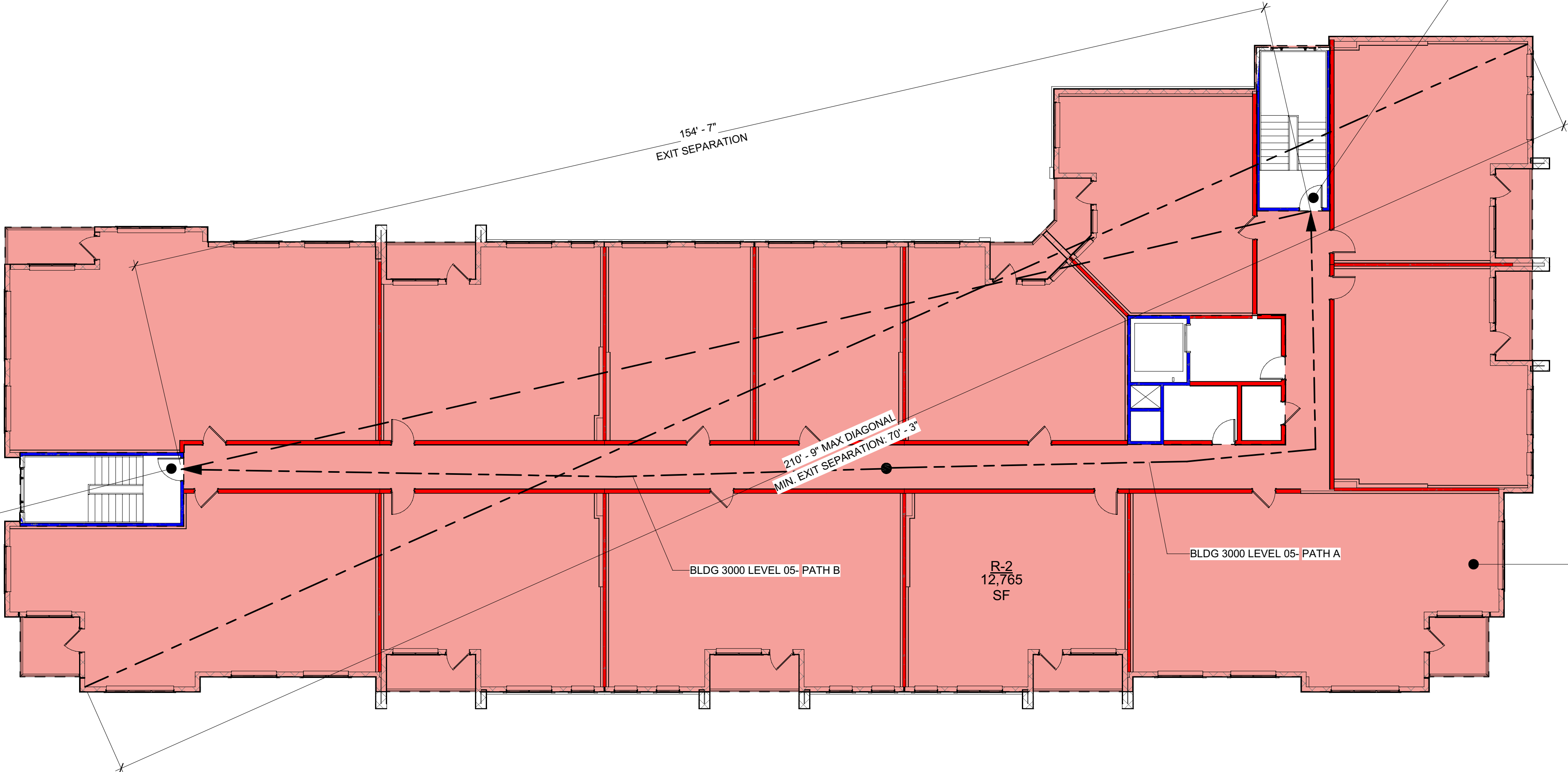
DESIGN

5801 PEACHTREE DUNWOODY RD.
BUILDING C, SUITE 200
ATLANTA, GA 30328
TELEPHONE: 678-506-8830
DYNAMIKDESIGN.COM

DOOR 01 & STAIR 01				TRIBUTARY OCC. LOAD	
	FIRE RATING	WIDTH REQUIRED	WIDTH PROVIDED	EXIT CAPACITY	EXIT DISCHARGE
DOOR	90 MIN	0.2 x 32' = 6.4"	36" (34" CLR)	170	STAIR 01
STAIR	2 HR	0.2 x 32' = 6.6"	44"	146	EXTERIOR

BUILDING 3000	
TOTAL AREA 12,765 SF	OCCUPANCY TYPE R-2
LOAD FACTOR 200 SF / OCC.	
OCCUPANT LOAD 64	

DOOR 02 & STAIR 02				TRIBUTARY OCC. LOAD	
	FIRE RATING	WIDTH REQUIRED	WIDTH PROVIDED	EXIT CAPACITY	EXIT DISCHARGE
DOOR	90 MIN	0.2 x 32' = 6.4"	36" (34" CLR)	170	STAIR 02
STAIR	2 HR	0.2 x 32' = 9.6"	44"	146	EXTERIOR



CONSULTANT:

David Yung

Digitally signed by David Yung

Date: 2024.06.10 17:13:55 -04'00'

1726 E ATLANTIC BLVD
POMPANO BEACH, FL 33060

220 MAIN ST
GAINESVILLE, FL 32601

PROJECT NUMBER: CLR2023-03

ATLANTIC ONE

CLIENT:

DRAWING RELEASE	DATE
DRC	06/11/2024

TITLE:
BUILDING 3000
LEVEL 05 CODE
DATA - LIFE
SAFETY PLAN

SHEET NUMBER:

CD-12

LIFE SAFETY SUMMARY

BUILDING 3,000		CONSTRUCTION TYPE(S):		IIB
STORIES:	05	BASEMENT:	NO	
USE GROUP(S):	R-2	GROSS AREA:	59,834 SF	
SPRINKLERS:	NFPA 13	TOTAL UNITS:	56	

OCCUPANCY			
OCC.	AREA	LOAD FACTOR	OCC. LOAD
BUILDING 1000			
LEVEL 01			
A-3	3,189	15	213
M	2,456	60	42
R-2	12,069	200	62
S-2	1,365	4	
	19,109		321
LEVEL 02			
R-2	34,381	200	172
	34,381		172
LEVEL 03			
R-2	34,363	200	172
	34,363		172

OCCUPANCY			
OCC.	AREA	LOAD FACTOR	OCC. LOAD
BUILDING 2000			
LEVEL 01			
A-3	454	15	31
M	3,321	60	56
R-2	2,153	200	11
S-2	773	300	3
	6,701		101
LEVEL 02			
R-2	16,583	200	83

OCCUPANCY			
OCC.	AREA	LOAD FACTOR	OCC. LOAD
LEVEL 03			
	16,583		83
R-2	16,583	200	83
	16,583		83
LEVEL 05			
R-2	16,583	200	83
	16,583		83
BUILDING 3000			
LEVEL 01			
R-2	4,598	200	23
	4,598		23
LEVEL 02			
R-2	12,762	200	64
	12,762		64
LEVEL 03			
R-2	12,765	200	64
	12,765		64
LEVEL 05			
R-2	12,765	200	64
	12,765		64

OCCUPANCY			
OCC.	AREA	LOAD FACTOR	OCC. LOAD
BUILDING 4000			
LEVEL 01			
R-2	11,729	200	59
	11,729		59
LEVEL 02			
R-2	18,301	200	92
	18,301		92
LEVEL 03			
R-2	18,280	200	92
	18,280		92
CLUBHOUSE			
LEVEL 01			
A-3	4,031	15	270
B	3,198	100	35
	7,229		305

LEGEND

1-HOUR RATING

2-HOUR RATING

FEC

FEC

FEC

RECESSED, SEMI-RECESSED, AND SURFACE-MOUNTED FIRE EXTINGUISHER CABINET AT 27" A.F.F. MAX.

TRAVEL DISTANCE

EXIT SEPARATION DISTANCE

MAXIMUM DIAGONAL

GENERAL NOTES

- SEE CODE DATA SHEET FLOOR PLANS FOR F.E.C. LOCATIONS. FIRE EXTINGUISHERS LOCATED IN PUBLIC AREAS AND BACK OF HOUSE ROOMS SHALL HAVE A MINIMUM RATING OF 10A:120B.C.
- INSTALL ONE (1) EACH 2A:10BC FIRE EXTINGUISHER UNDER KITCHEN SINK IN ALL APARTMENT UNITS.
- PER TABLE 508.4 OF THE 2023 FBC, 1 HOUR OCCUPANCY SEPARATION IS REQUIRED BETWEEN RESIDENTIAL ASSEMBLY, AND BUSINESS OCCUPANCIES. RESIDENTIAL BUILDING TO BE EQUIPPED WITH AN AUTOMATIC SPRINKLER SYSTEM IN ACCORDANCE WITH SECTION 903.3.1.1 OF THE 2023 FBC.
- FIRE SPRINKLER DESIGNER TO CONFIRM LOCATION AND QUANTITY OF FIRE HOSE CABINETS AT HORIZONTAL EXITS/FIREWALLS.

1 BUILDING 3000 LEVEL 05

SCALE: 3/32" = 1'-0"

KEY PLAN

